

# The State of the Philippine Economy

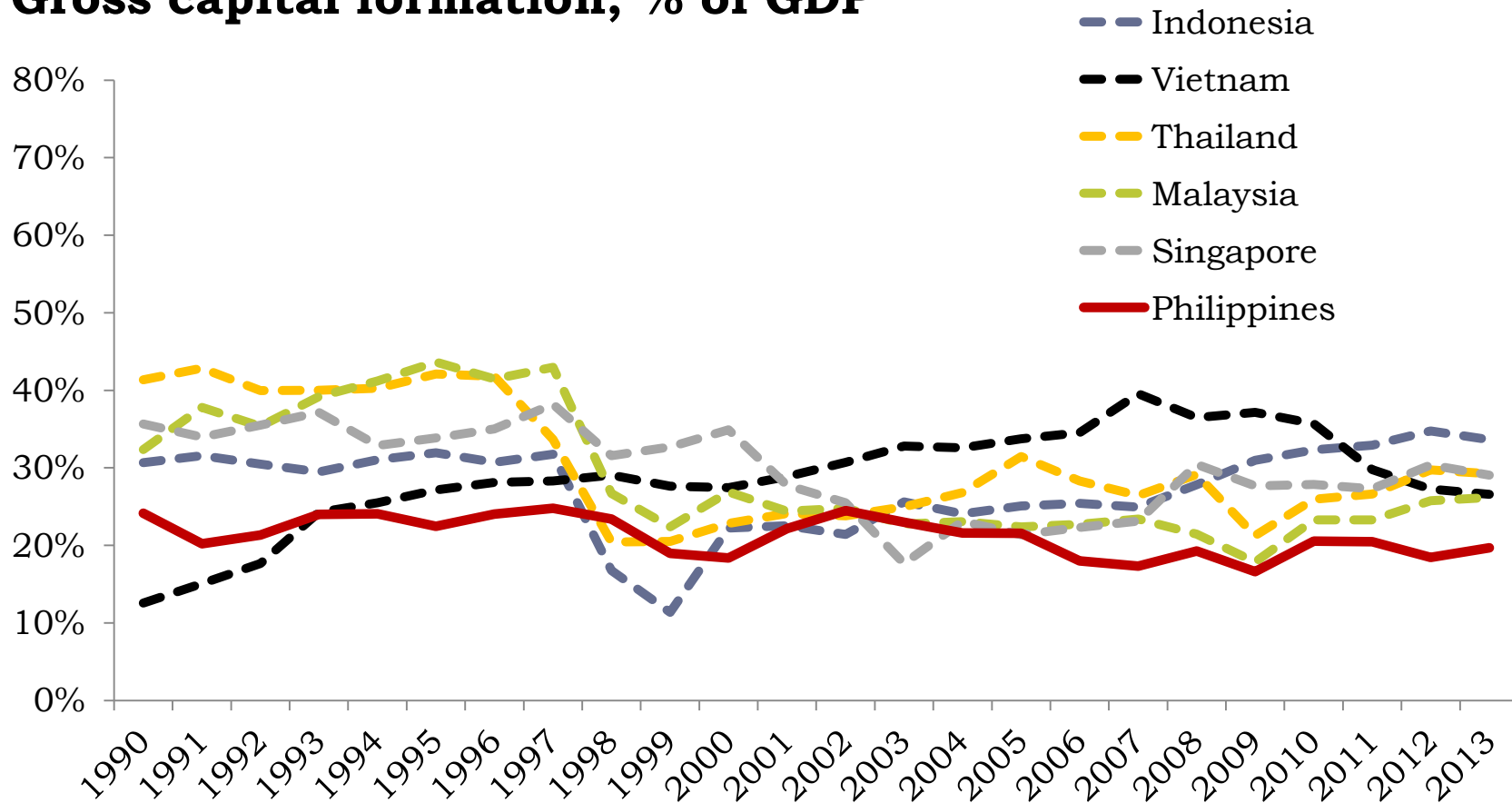
Ayala-UPSE Economic Forum

January 29, 2015

Romeo L. Bernardo

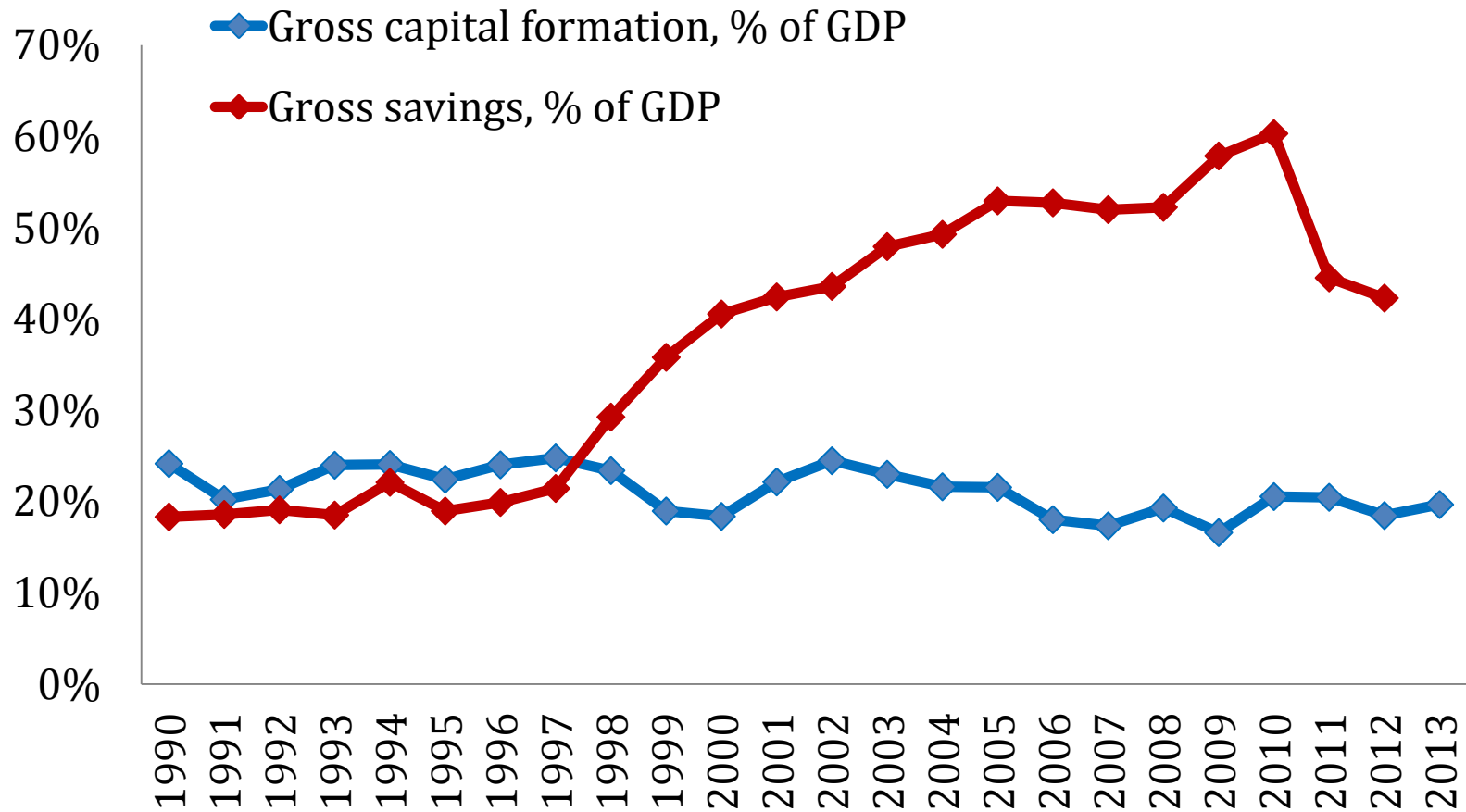
# Investments to GDP

## Gross capital formation, % of GDP



Source: World Bank, data formerly known as gross domestic investments

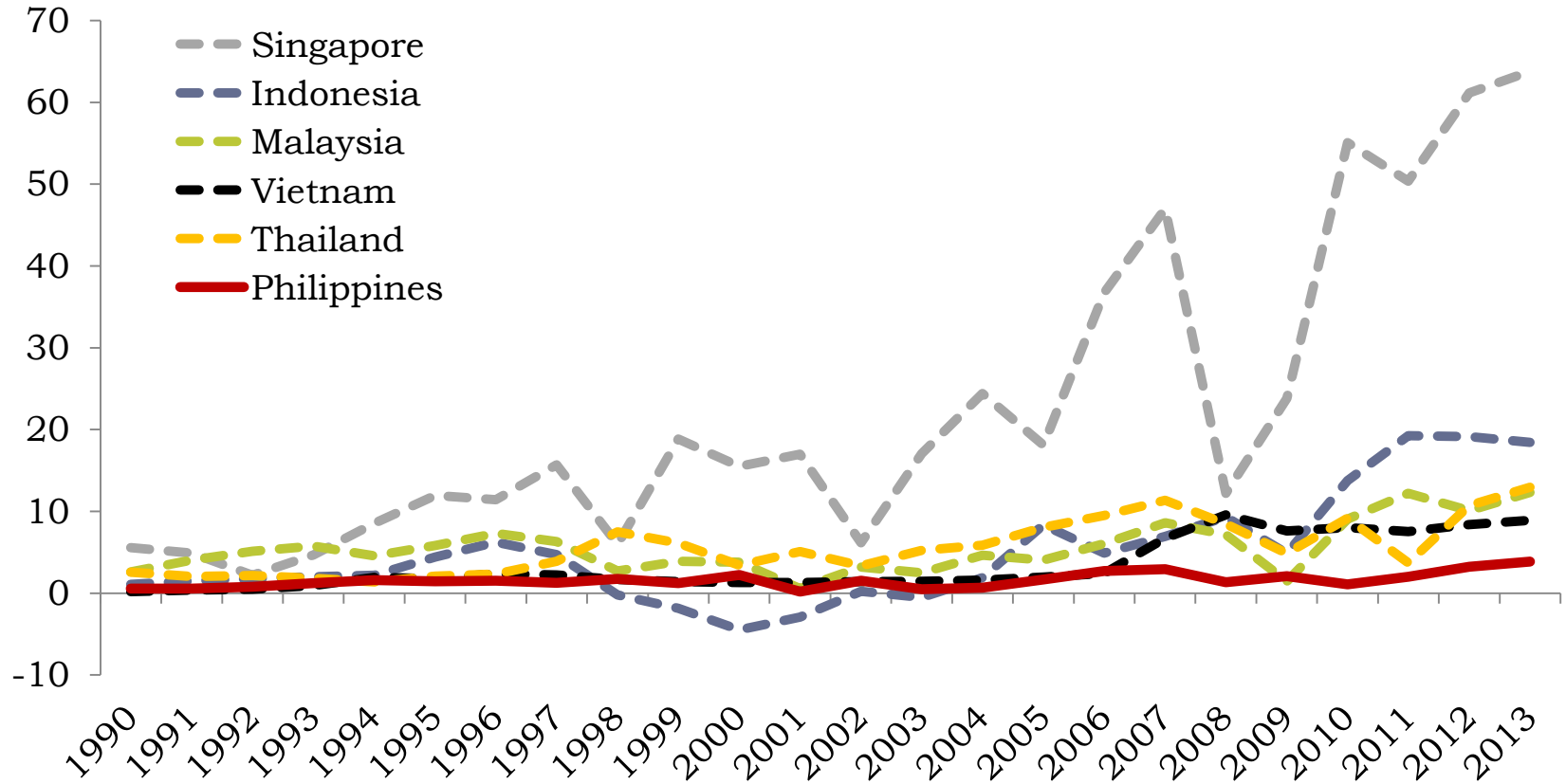
# PH Investments and Savings



Source: World Bank, no 2013 data yet for gross savings

# Asean-6 FDI flows

## Net FDI flows, Bn US\$



Source: UNCTAD

# Philippine Economic Outlook

---

## **GlobalSource baseline forecasts in next 5 years**

Key Indicators	2015	2016	2017	2018	2019
GDP	6.5%	6.5%	6%	6%	6%
Inflation	2.8%	3.4%	3.5%	3.6%	3.7%

---

